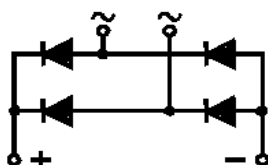


特点

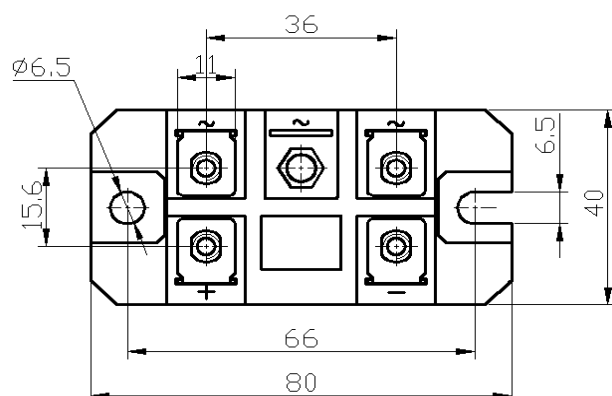
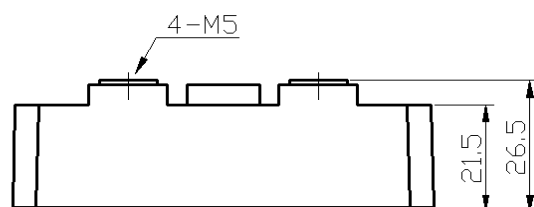
- 国际标准封装
- 低正向压降
- 绝缘电压2500V~

应用

- 仪器设备的直流电源
- PWM变频器的输入整流电源
- 逆变焊机



M18



Dimensions in inches and (millimeters)

最大值和电特性

参数名称	符号	MDQ100 -12	MDQ100 -16	UNIT
反向重复峰值电压	V_{RRM}	1200	1600	V
反向不重复峰值电压	V_{RMS}	1300	1700	V
直流输出电流 (三相全波整流电路 $T_c=100^{\circ}C$)	$I_{(AV)}$	100		A
正向浪涌电流 ($t=10ms, 50HZ, sin, T_{jm}$)	I_{FSM}	1400		A
I^2t 值 ($V_R = 0.6V_{RRM}, T_{jm}$)	I^2t	9800		A^2s
正向峰值电压 ($I_{FM}=150A, T_j=25^{\circ}C$)	V_{FM}	1.2		V
反向重复峰值电流 ($V_R=V_{RRM}, T_j=150^{\circ}C$)	I_R	5		mA
绝缘电压(交流1分钟)	V_{isol}	2500		V
热阻抗 (结-壳) 单面散热, 正弦半波	$R_{th(j-c)}$	0.36		$^{\circ}C/W$
安装力矩 (铜底板) M6	Md	$5 \pm 15\%$		Nm
安装力矩 (接线端) M5		$3 \pm 15\%$		Nm
重量	Weight	190		g
工作结温	T_j	-40 to $+150$		$^{\circ}C$
额定结温	T_{jm}	150		$^{\circ}C$
储存温度	T_{stg}	-40 to $+125$		$^{\circ}C$

Ratings And Characteristic Curves

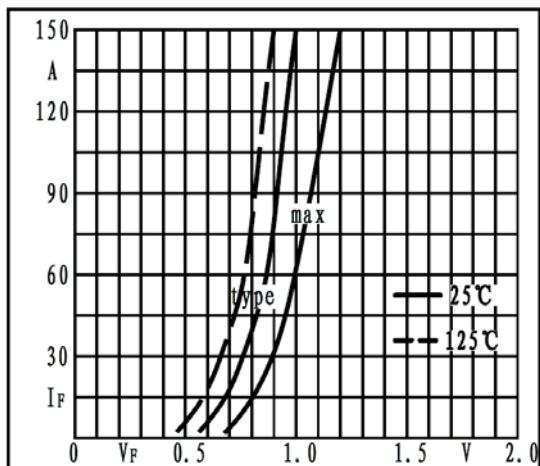


Fig1. Forward characteristics

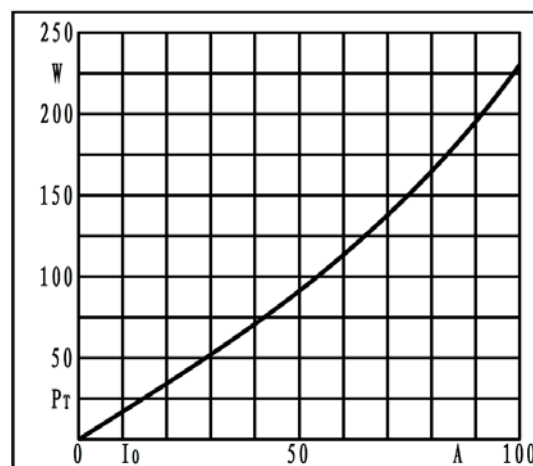


Fig2. Power dissipation

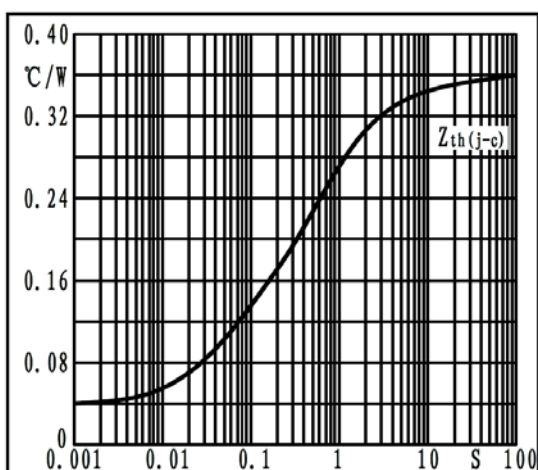


Fig3. Transient thermal impedance

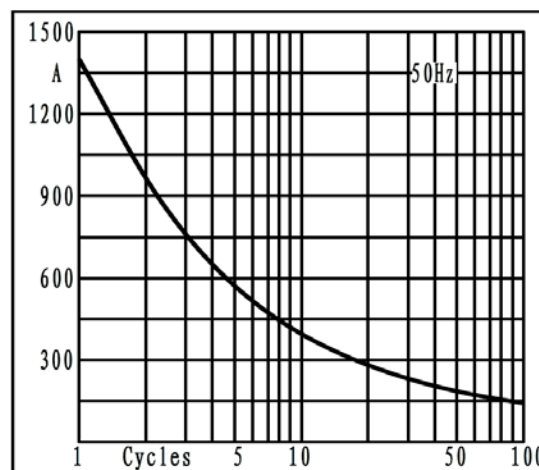


Fig4. Max non-repetitive forward surge current

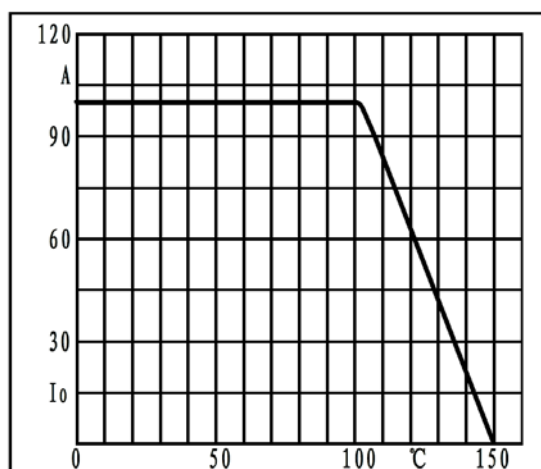


Fig5. Forward current derating curve